

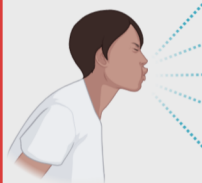
Preventing human-to-bat transmission of SARS-CoV-2 for bat rehabilitation

Exposure Risk



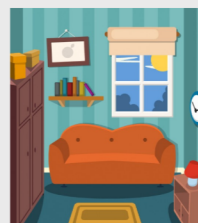
Contact exposure

Bats coming into contact with contaminated hands or equipment



Aerosol exposure

Infectious droplets from handler holding bats in close proximity



Environmental exposure

Sharing enclosed, poorly ventilated spaces with bats, where virus may persist in the air or on surface



MAP
your plan to
prevent
transmission
to bats

Mitigation Strategies

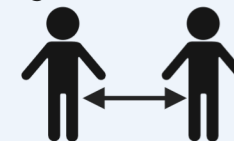
Minimize direct contact with bats by keeping handling to a minimum, use face masks, gloves, and closed containers for transportation



Assess the risk you may pose of exposing bats to SARS-CoV-2 and avoid contact with bats if you have or suspect you have COVID-19 or have been exposed to someone with or suspected to have COVID-19



Protect bats by modifying collection, rehabilitation and release practices to reduce exposure to SARS-CoV-2



www.iucnbsg.org Complete recommendations @ <https://tinyurl.com/map4rehab>

